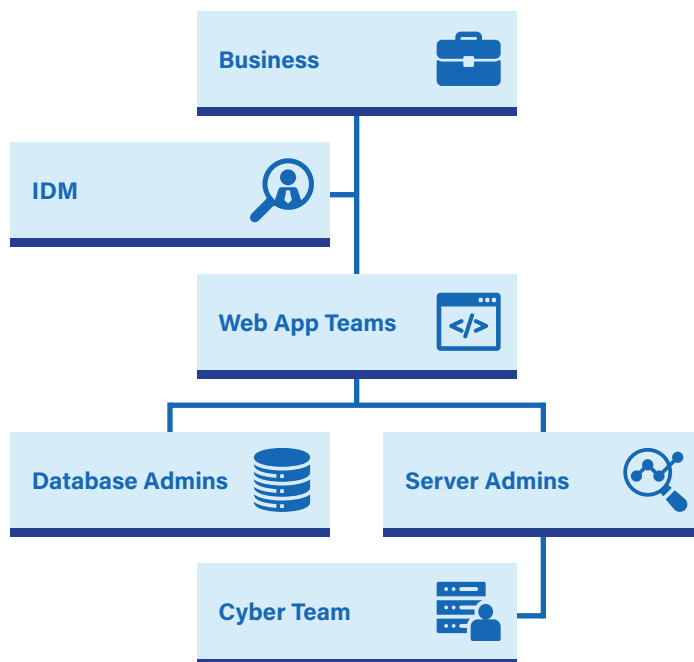


# Is Your Corporate Data Secure?

*Do you think the Cyber Team can Protect Everything?  
How Long does it take to Find and Fix Issues?*

*Current Method of Web Apps & Report Development  
Involves Different Teams working by Emails and Tickets.*

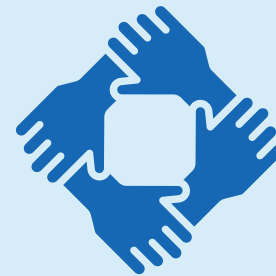
## This is NOT Collaboration



*Cyber Teams monitor your network but are the last team to be involved in security for applications. They need to be included from the start to secure your Sensitive Data.*

Stop Being Reactive and Start to be Proactive — Work Together to Secure Your Data.

Frost Mountain offers a solution to support collaboration between technical teams responsible for securing sensitive data.

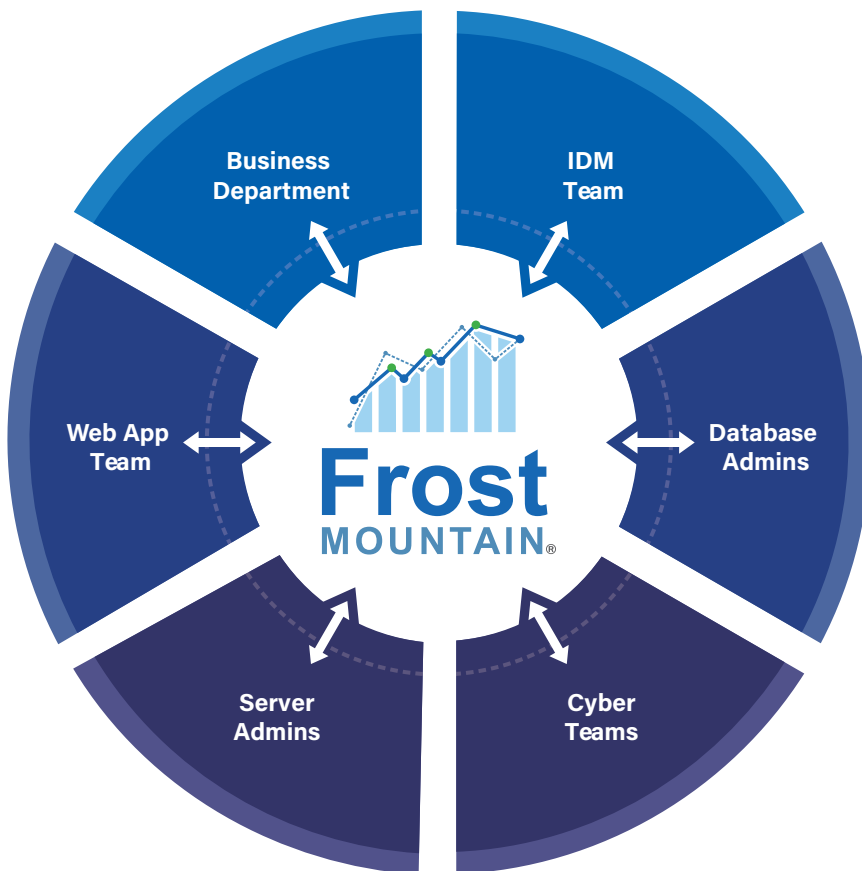


Our goal is to help your teams secure sensitive data by working together, with shared security reports to improve collaboration and secure your systems.

## This is Collaboration

# FROST ULTRA Trust Level Mapping™

*Our Data Model Extends Zero Trust to Dashboards*



## Cyber Security Collaboration Reporting Model

*"The core modules are designed to proactively secure data at the modeling level when creating applications and reports."*

**David Vigna**  
**Founder, Principal Consultant, Frost Mountain LLC**  
*Winner of the AFCEA - Epic App Challenge 2022*

We are engaged in R&D, Prototyping, and Patents focusing on Data Privacy, Data Security, and Access Controls for Corporate Dashboards & Reports with Sensitive Data Shared between User Groups.

### AWARDED PATENTS

Enterprise Reports, Error Handler and Audits Compartmentalized by Web Application



Data Classification of Columns For Web Reports And Widgets



### PUBLISHED PATENTS

Web Framework Designed For Secure Locked Down Browsers



Method Of Implementing Enterprise Cyber Reports



Data Classification Model with Key Store For Import, Storage, Export Security Compliance End Point Checks



### PROVISIONAL PATENT

Dashboard & Report Widget Layouts with Versioning: Multiple Displays and Classification of Data Sets & Inputs

